

Carrier 30 AWH 015 HC

Specifications

Brand	Carrier
Type	30 AWH 015 HC
Product type	Heat pump
Capacity kW	14,5
Capacity Tons	4,1
Refrigerant	Freon
Refrigerant Type	R-410A
Pump	✓
Hydronic Module	✓
Weight in kg.	112
Sizes	910x380x1370 mm (LxWxH)
Number of fans	2
Remarks	Y.o.b. 2015
Stock	1

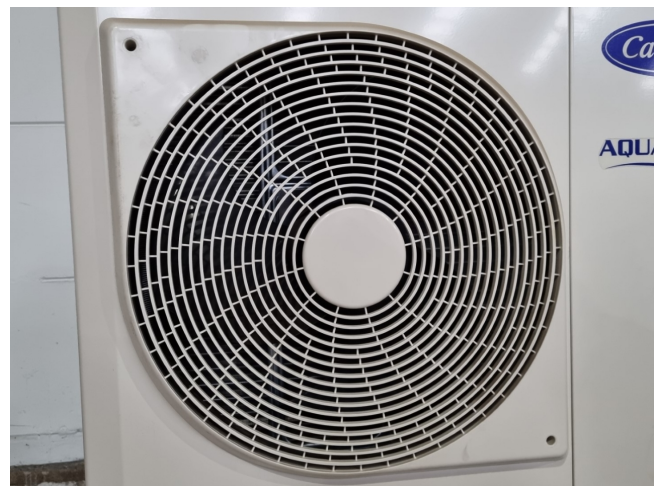
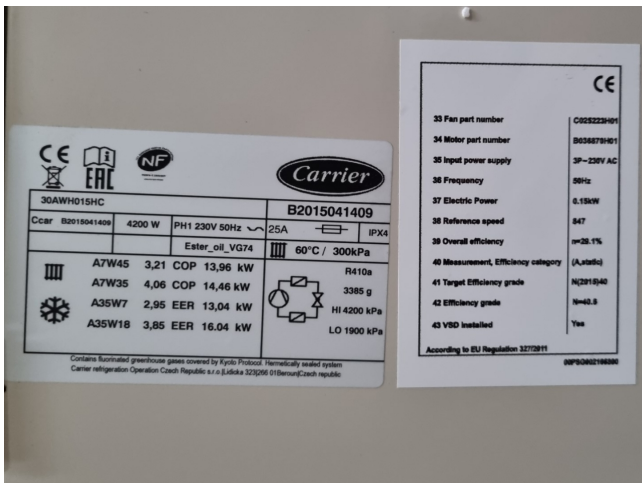


Description

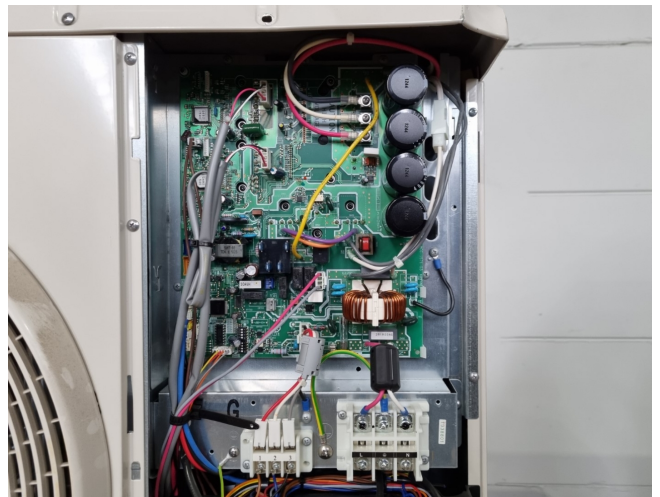
Used Carrier 30 AWH 015 HC

New Carrier 30 AWH 015 HC reversible air cooled chiller / heat pump on R410a. Complete with a DC twin-rotary compressor, condenser with 2 propeller fans, plate heat exchanger and a Grundfos UPML 25-95 180 water pump. Cooling capacity: 16,0 kW and heating capacity: 14,5 kW.

*All components of this used chiller will be tested on adequate performance, leak free condition (condensing blocks), compressors, fans, control panel, and so forth). Choosing HOSBV means buying with warranty. We perform an industrial cleaning. *If requested we are happy to arrange your shipment.









Your partner for used commercial and
industrial refrigeration equipment

